

FROM FAILURE TO FREEDOM: DISMANTLING MILWAUKEE'S SCHOOL-TO-PRISON PIPELINE WITH THE YOUTH POWER AGENDA

# MILWAUKEE PUBLIC SCHOOLS' EXCLUSIONARY DISCIPLINE PUSHES STUDENTS OUT OF SCHOOL



10,267

SUSPENDED  
STUDENTS



1 OUT OF EVERY 3  
ninth-graders suspended



SUSPENSIONS LEAD TO:

LOWER ACADEMIC PERFORMANCE



DROP OUTS



ENTANGLEMENT IN CRIMINAL JUSTICE  
SYSTEM

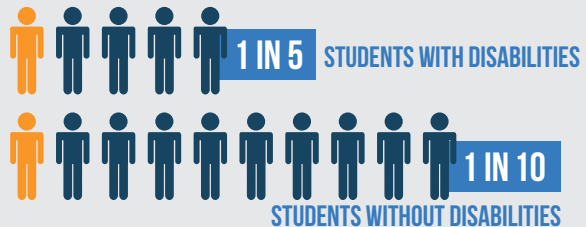


In one school year, suspensions and expulsions led to students **missing 65,740 days** of school; the equivalent of approximately **365 school years** of lost learning time.

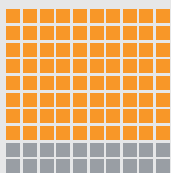
## BLACK STUDENTS SAME BEHAVIOR DIFFERENT PUNISHMENT

MPS **expelled Black students** more than 100 times, while **white students were suspended** for similar behavior.

## STUDENTS WITH DISABILITIES SUSPENSION RATES

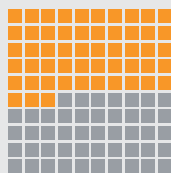


## SUSPENSIONS



80%

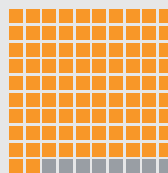
of suspensions were of  
Black students, **YET...**



53%

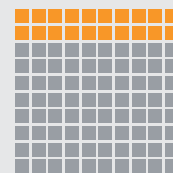
of total students  
enrolled were Black

## RESTRAINTS & SECLUSIONS



92%

of students (601) who  
were restrained or put in  
seclusion were students  
with disabilities, **YET...**



20%

of total enrollment  
are students with  
disabilities

# THE OPPRESSIVE POLICING OF MILWAUKEE'S STUDENTS

At least 12 schools have **metal detectors** screening young people at the front door, forcing **12,224** young people through these devices every morning.



## CLASSROOM VS COURTROOM

An arrest in high school nearly **doubles** the odds of a student dropping out, and a court appearance nearly **quadruples** the odds of a student dropping out.

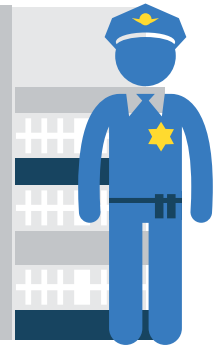


**More than 3,000** truancy citations force students and families to go to court and miss school or work.

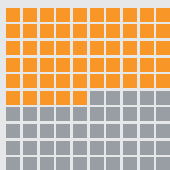


## LAW ENFORCEMENT SURROUND THE SCHOOL AND COMMUNITY

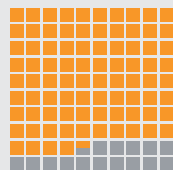
- In-school squad of 12 officers
- Officers near entrances, exits, and adjacent streets
- Truancy Abatement and Burglary Suppression squad sweeps the streets
- 269 School Safety Assistants in the schools



## REFERRALS TO LAW ENFORCEMENT for Black students



**55%**  
of students in Milwaukee in 2014 were Black, **YET...**



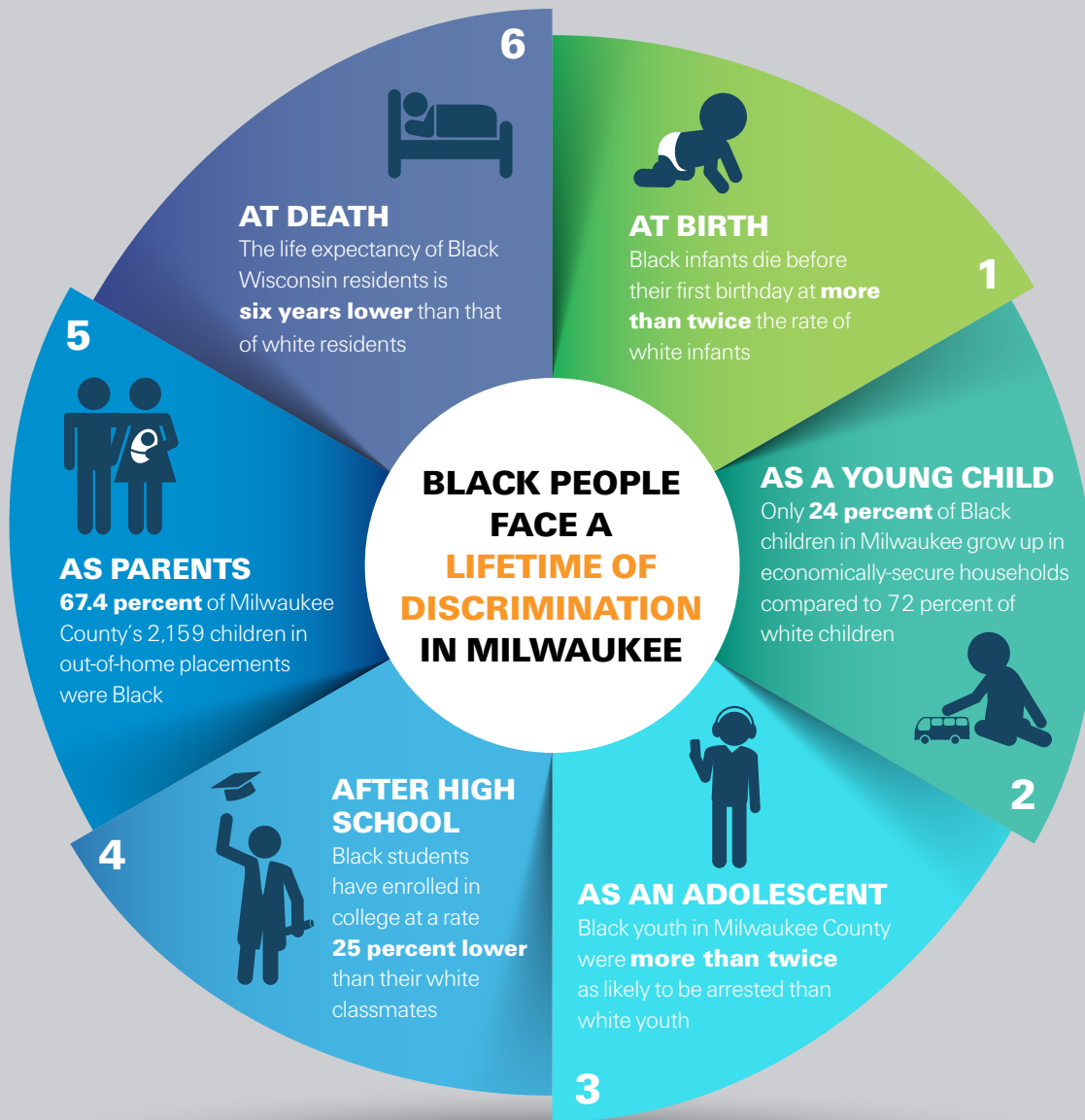
**84.6%**  
of referrals to law enforcement were Black students



## \$15.6 MILLION SPENT PER YEAR ON CRIMINALIZING STUDENTS

<b>\$13,700,000</b>	Safety Assistants for MPS
<b>\$ 1,120,898</b>	Police Officer Program in Schools
<b>\$ 435,000</b>	Truancy Abatement and Burglary Suppression Officers
<b>\$ 122,000</b>	Adjudication of Truancy Citations
<b>\$ 76,000</b>	Installation of X-Ray Machines
<b>\$ 60,000</b>	External School Police Squads
<b>\$ 51,000</b>	Maintenance of X-ray Machines
	Detentions and Juvenile Court

# FAILURE AS A CYCLE



## SURROUNDING COMMUNITIES ARE FARING MUCH BETTER



Milwaukee's **median income** of \$36,800 is **48 percent lower** than that of surrounding districts which earned \$71,000.

MPS' high school **graduation rate** is **35 percent lower** than that of surrounding districts, which are in more affluent communities that employ far less oppressive discipline systems.



# YOUTH POWER AGENDA

## DIVEST FROM FAILURE



Remove **police officers**  
from in and around schools



Remove **metal detectors**  
from schools



End **suspensions  
and expulsions**



Stop the use of  
**seclusion and  
restraints**



End **arrests and citations** for  
misdemeanors. Provide citywide  
alternatives to incarceration for students  
charged with felonies in school



Stop **truancy  
citations and  
prosecutions**

## INVEST IN FREEDOM

- ☒ Create an inclusive school code
- ☒ Increase the number of licensed support professionals, including therapists, social workers, psychologists, and guidance counselors
- ☒ Implement robust restorative justice practices citywide
- ☒ Reduce classroom size
- ☒ Provide culturally-responsive education and training
- ☒ Collect and publish accurate data regarding all forms of discipline
- ☒ Provide universal, free, high-quality early childhood education
- ☒ Create a universal youth jobs program